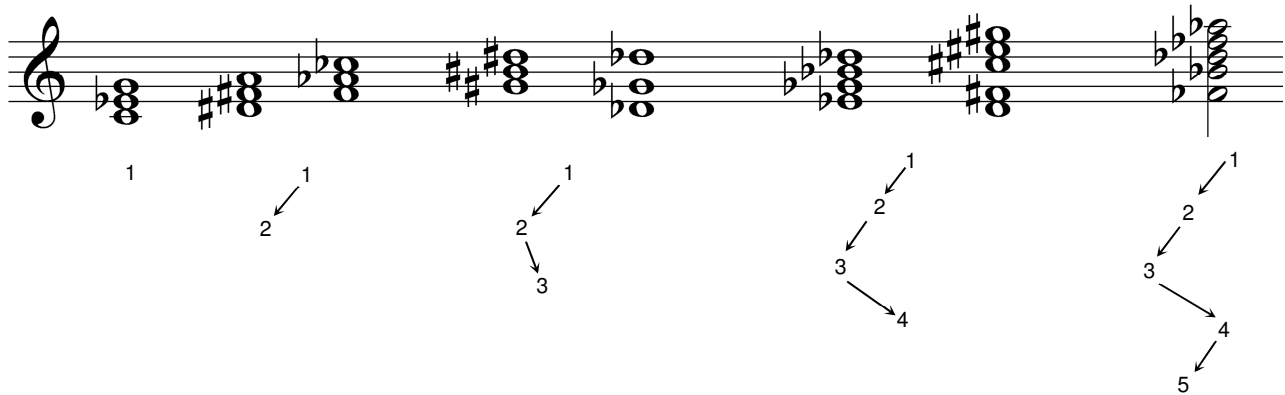


The triad worksheets ask you to write and identify chords. Below are a few helpful hints for doing these tasks neatly and accurately.

Placement of Accidentals

- Accidentals are always placed to the left and on the line or in the space with the note they modify.
- Accidentals on a chords are staggered when they are within a 7th of another accidental.

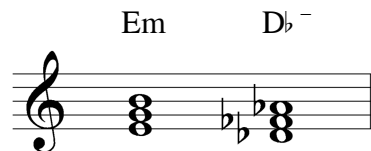
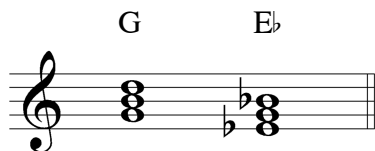


Chord Names

Chord names, also called “pop chord symbols,” “lead sheet symbols,” or just “chord symbols” tell someone reading the music what notes are in the chord and what inversion the chord is in. There are also symbols for 7th chords, added tone chords, and all sorts of complex structures. All we need to use for these worksheets are the symbols for triads and inversions.

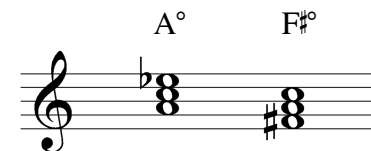
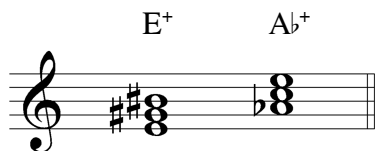
Major: write just the uppercase letter.

Minor: add m, mi, or – to the uppercase letter.



Augmented: add + to uppercase letter.

Diminished: add a ° to the uppercase letter.



Inverted chords are shown with the chord name followed by a slash and the bass note.

